

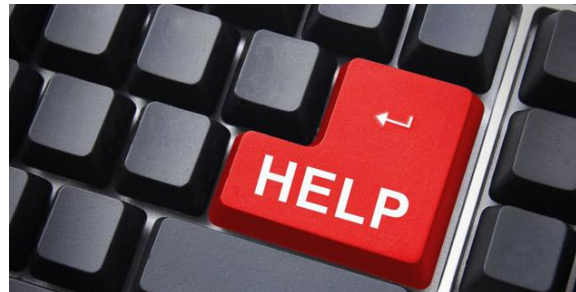


Education Events & Information June 2018

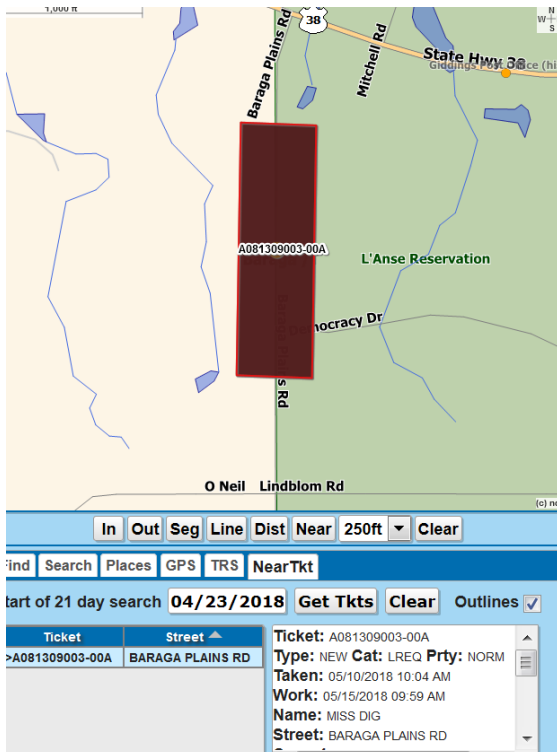
TICKET SUPPORT

Ticket support is available for online users. If you need assistance placing an online request, please contact MISS DIG 811's Support Team at 877-647-7344.

For Design Ticket assistance, please contact Stephanie Boe at sboe@missdig811.org



JUNE TELECONFERENCES



Are you interested in finding out if other projects are taking place around your job site? The NEAR TICKET feature is available for Remote Ticket Entry & Design Ticket users to show tickets placed by others in the vicinity of your work location. Please join us in June to discuss the benefits of NEAR TICKET and how to use it.

Teleconference phone number : 248-724-5800 (ID 827817)
Time: 9:30am

Click on a date below to RSVP.

June 12

June 19

Your Opinion Matters!

MISS DIG 811 would like to thank everyone who provides us with valuable opinions and feedback. As a result of your input, design ticket response time will change from 21 calendar days to 10 business days. Expect to see the change in June.

August						
S	M	T	W	T	F	S
			1	2	3	4
5	6	7	8	9	10	11
12	13	14	15	16	17	18
19	20	21	22	23	24	25
26	27	28	29	30	31	

Help us help you!



To assist us in better serving the public and our membership, MISS DIG 811 would like your input. Leave us a constructive Google review with your feedback and/or questions through August 11, 2018.

To show our appreciation, we will send you some MISS DIG 811 SWAG when you submit a screenshot of your review with your name and mailing information to md811hlm@gmail.com. You will also be entered to win an Amazon gift card! Three winners will be announced on Monday, August 13, 2018.

Winners will be selected at random.

1st Place: \$250
2nd Place: \$100
3rd Place: \$50



Damage Prevention Associations



The best way to stay informed is to get involved. Damage Prevention Associations (DPA) are looking to municipalities, excavators, and facility owners in their regions for participation.

If you would like to attend a meeting, but are unable to travel to a location below, you may access them remotely. *Participation is needed by the excavating community to keep DPAs viable.*

- To access remotely, call 248-724-5800 ID (827817)
- When available, visual aids may be viewed during the meeting with [JOIN.ME](https://www.join.me/) at <https://www.join.me/>

TRI-COUNTY

Meeting Location

Saginaw County Road Commission
3020 Sheridan Ave
Saginaw MI 48607

Meeting Times- Monthly

9AM to 10:30AM on the 3rd Thursday of each month.

Next Meeting: Thursday, June 21st

Contacts

Scott Hare - Saginaw County Road Commission
hares@scrc-mi.org
989-399-3754

Richard Crannell - Tri-County Contractors Association
rcrannel@hotmail.com

Paul Harding- MISS DIG 811
pharding@missdig811.org
248-370-6426

To receive Tri-County DPA meeting reminders, please fill out the form from the link below.

[TRI-COUNTY DPA FORM](#)

WESTERN MICHIGAN

Meeting Location

Plainfield Water Distribution Center
5195 Plainfield Ave
Grand Rapids MI 49525

Meeting Times- Quarterly

1:30PM to 3PM

Wednesday, August 1st, 2018
Wednesday, November 7th, 2018

Contact

Matt Weldon- Plainfield Township
weldonm@plainfieldmi.org

Linda Portelli- MISS DIG 811
lportelli@missdig811.org
248-370-6441

To receive Western Michigan DPA meeting reminders, please fill out the form from the button below.

[W MI DPA FORM](#)

SOUTHWESTERN MICHIGAN

Meeting Location

Kalamazoo Community Foundation Bldg
402 E Michigan Ave
Kalamazoo MI 49007

Meeting Times- Quarterly

10AM to 11:30AM

Wednesday, August 1st, 2018
Wednesday, November 7th, 2018

Contact

Jane McDonagh- Kalamazoo City
mcdonaghj@kalamazoo-city.org

Linda Portelli- MISS DIG 811
lportelli@missdig811.org
248-370-6441

To receive Southwestern Michigan DPA meeting reminders, please fill out the form from the button below.

[SW MI DPA FORM](#)

NORTHERN MICHIGAN

Under Construction at this time.

What do the Gold Shovel Standard Committee (GSS), Great Lakes Foundation, Michigan Damage Prevention Board (MDPB), Michigan Utility Coordination Committee (MUCC), and Ticket Initiation Management Execution (TIME) all have in common?

They are a great way to get involved and keep up-to-date on the latest discussions. Information about each of them can be found on the *Committees & Best Practices* page of MISS DIG 811's website.

WWW.MISSDIG811.ORG

